

City of Marion

Strategic Plan 2024-2034 Summary

A great place to *live*



Mayor's Message

The Marion Council area is a great place to live, work and play. The Council is always looking for ways to provide even better service. This is why we have developed a new strategic plan reflecting the community's expectations.



We asked the community what they wanted, and, in essence, our people aspired to a pleasant lifestyle with good environmental values and a sense of community. From this we distilled a vision – 'A liveable, sustainable community.'

This vision is then fleshed out in a list of priorities for action over the coming years. You can also see the elected Council's aspirations for how Council staff will work to achieve the community's goals.

I hope there is much that you find agreeable in this plan for a Liveable, Sustainable Community.

KRIS HANNA

Mayor Kris Hanna

To view council's full Strategic Plan scan the QR code or visit:
marion.sa.gov.au/strategic-plan



Kaurna Acknowledgement

Ngadiu tampendi Kaurna meyunna yaitya
mattanya yaintya yerta

This Kaurna Acknowledgement was prepared in consultation with traditional custodians.

Community Vision

A liveable, sustainable community.

The strategic directions of Liveable, Sustainable, and Community reflect the aspirations of the community for the City of Marion's future.

A fourth strategic direction, Our Organisation, sets the focus for Council and its staff toward fulfilling the 10 Year Community Vision and Strategic Directions. These interconnected directions emphasise a commitment to achieving holistic outcomes for the council area.

Liveable

We will create and maintain safe, attractive and accessible public places and facilities.

How will we know we are successful?

-  There is growing satisfaction with recreational options available in council owned public places and spaces.
-  Over **80%** of the community report that our facilities are intergenerational, vibrant, multipurpose, accessible, and welcoming.
-  Over **80%** of the community report that they feel safe when moving around our city and public spaces.

Community

We are a friendly, inclusive, and connected community, where everyone belongs.

How will we know we are successful?




-  Over **80%** of the community rate City of Marion as 'friendly' and 'welcoming'.
-  Increasing participation in our community engagement as a result of innovative engagement approaches.
-  Over **80%** of residents report they are experiencing improved health and/or wellbeing because of participation in our programs.



Our Organisation

We listen to our community and partner for the benefit of our community. We deliver high quality, cost-effective services, reliably and innovatively.




How will we know we are successful?

-  Employee retention rate over **85-95%**
-  Asset renewal funding ratio between **90-100%**
-  A balanced or better funding position over the 10-year term of council's Long Term Financial Plan.

Sustainable

We protect, restore and connect to the natural environment, building resilience to climate change.

How will we know we are successful?

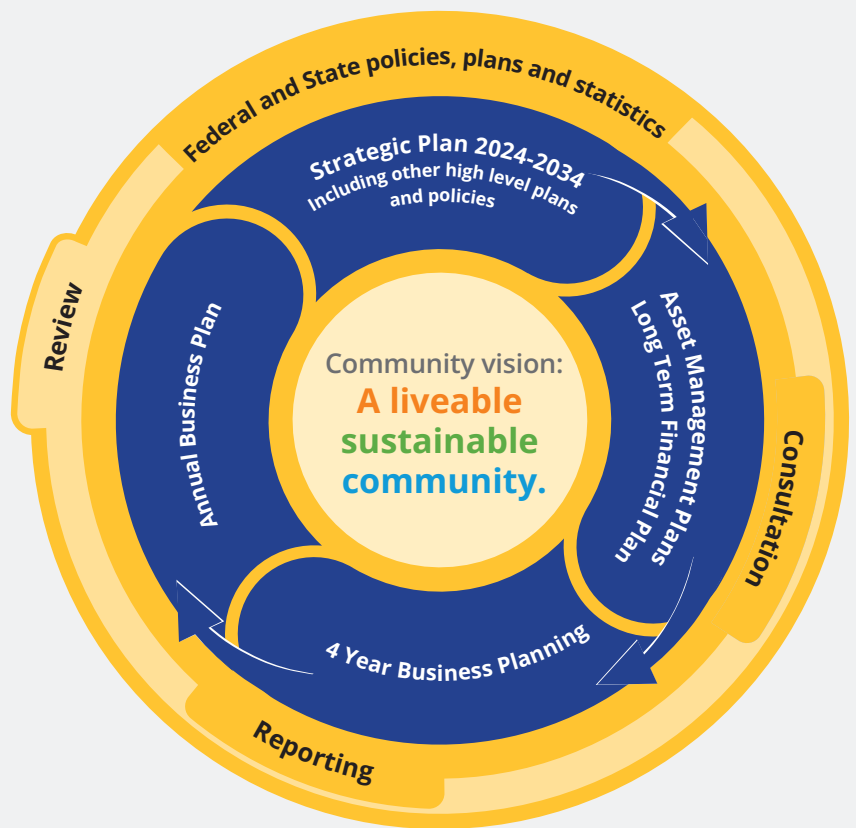
-  **4300** street and reserve trees planted annually until all suburbs are at capacity.
-  **70%** resource recovery from household kerbside collection services.
-  City of Marion (administration) will be carbon neutral by 2030 for its operations.

Council's Strategic Management Framework

The inner blue wheel within the framework provides a clear line of sight between the City of Marion Strategic Plan 2024-2034, and other high-level plans, which lead through to inputs into council's Asset Management Plans and Long-Term Financial Plan, actions of the 4 Year Business Plan and Annual Business Plan.

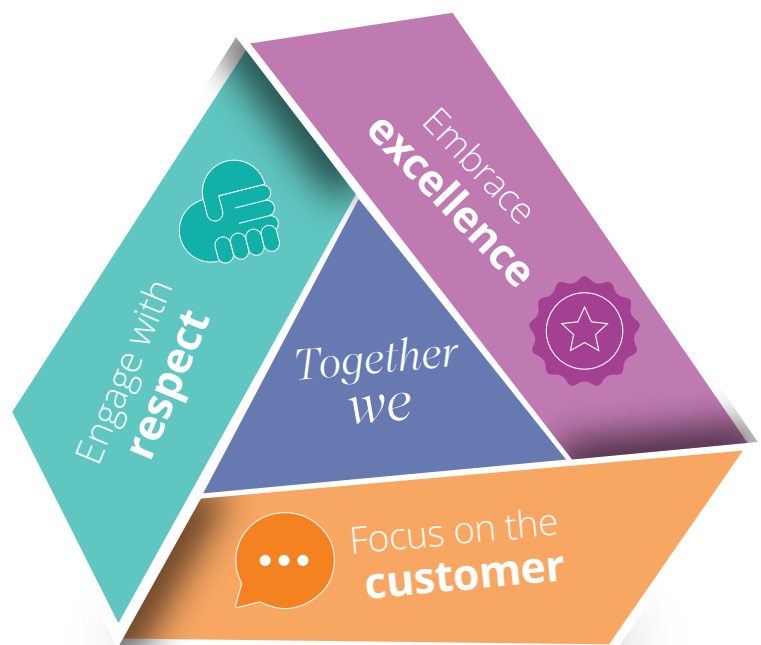
The outer yellow wheel shows the key inputs into planning, decision-making, and accountability. Alignment allows Council to be well-positioned to make informed decisions and achieve the best outcomes for the community.

Refer to full plan for details at:
marion.sa.gov.au/strategic-plan



Council's Values

Our Values inform what is important in how we deliver for our community. They aspire towards a consistent standard that can be expected from all who engage with the City of Marion.



8375 6600



council@marion.sa.gov.au



@CityofMarion



@CityofMarion



City of Marion



marion.sa.gov.au

